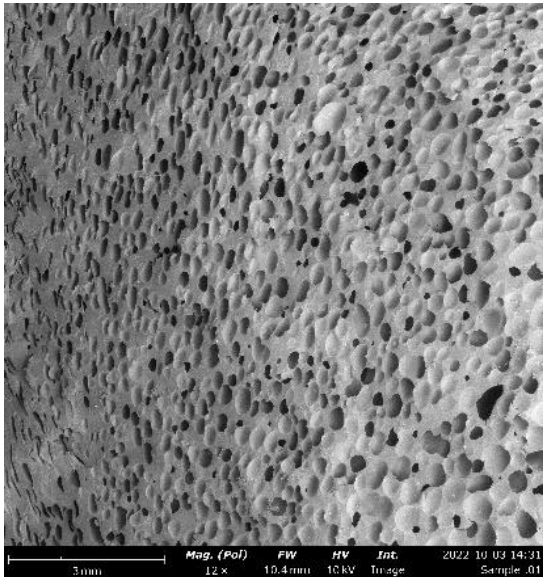


Product Data Sheet

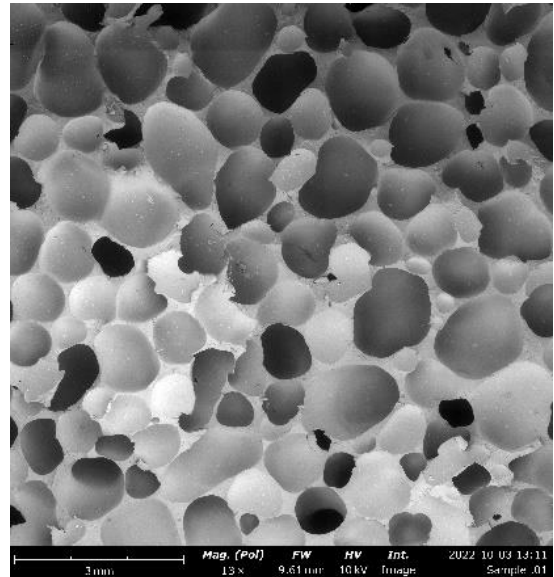
Foam based Polystyrene

Physical	Metric	Test Method
Density	1.04 g/cc	ASTM D792
Weight Reduction	21 – 54 %	

Edge Location



Center Location



Morphological

Metric

Avg. Cell Size	7.73E+02 μm
Avg. Cell Density	2.83E+03 cells/cc



770 Liberty Street Ext.
Grove City, PA 16127



724.807.8282



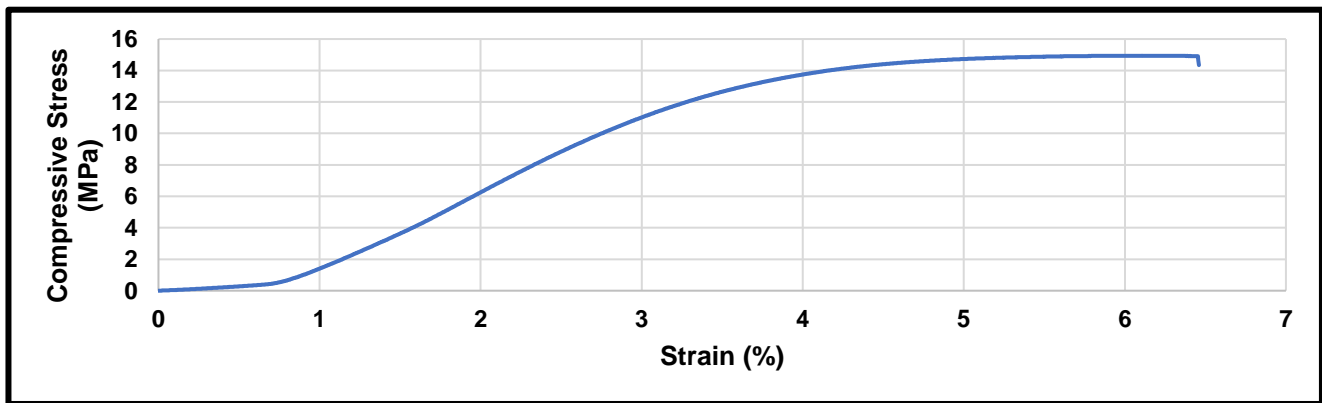
info@moxietec.com

Mechanical	Metric	Test Method
Notched Izod Impact, 23°C *	12.58 J/m	ASTM D256
Compression Strength **	15 MPa	ASTM D1621
Tensile Strength *	25.4 MPa	ASTM D638

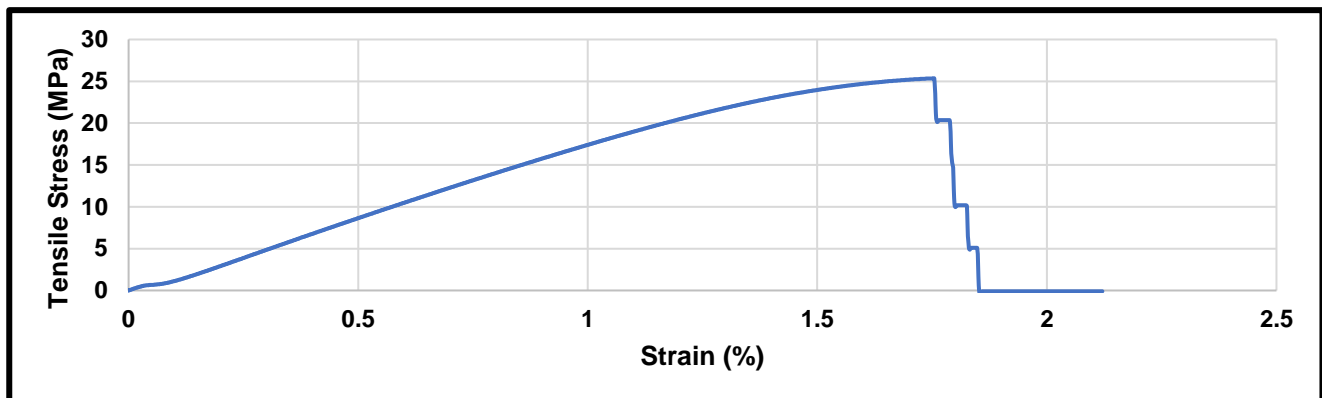
*- Data was collected from 7mm thick part with a 21% density reduction.

** - Data was collected from 57.15mm thick part with a 54% density reduction.

Compression:



Tensile:



770 Liberty Street Ext.
Grove City, PA 16127



724.807.8282



info@moxietec.com