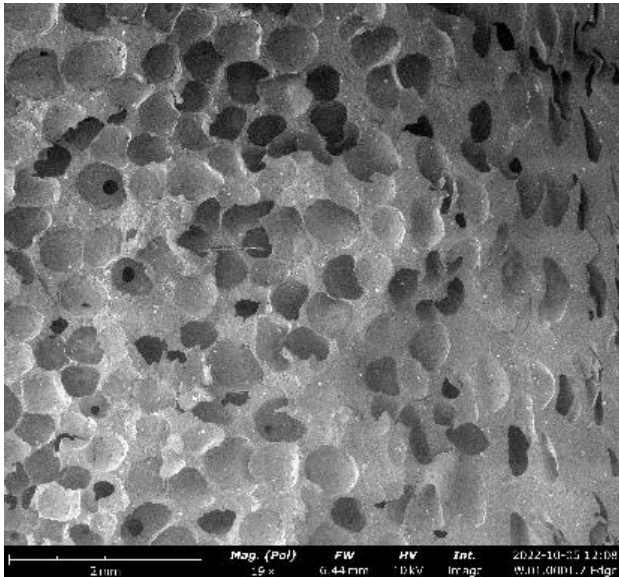


Product Data Sheet

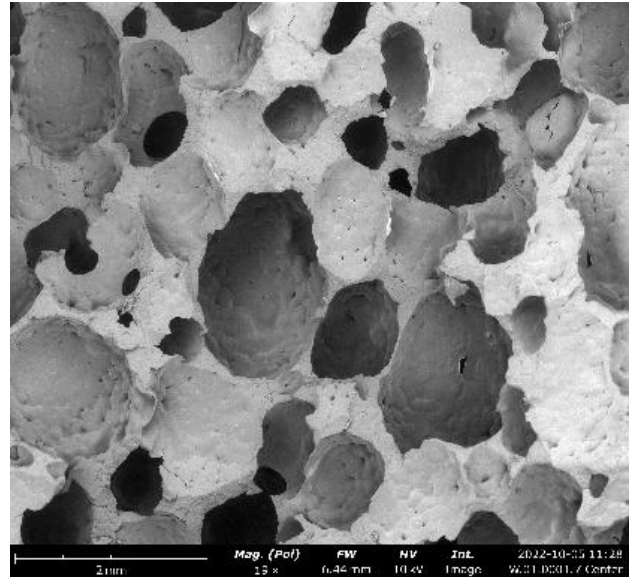
Foam based Polypropylene

Physical	Metric	Test Method
Density	0.90 g/cc	ASTM D792
Weight Reduction	16 – 53 %	

Edge Location



Center Location



Morphological

Metric

Avg. Cell Size	8.47E+02 μm
Avg. Cell Density	1.14E+03 cells/cc



770 Liberty Street Ext.
Grove City, PA 16127



724.807.8282



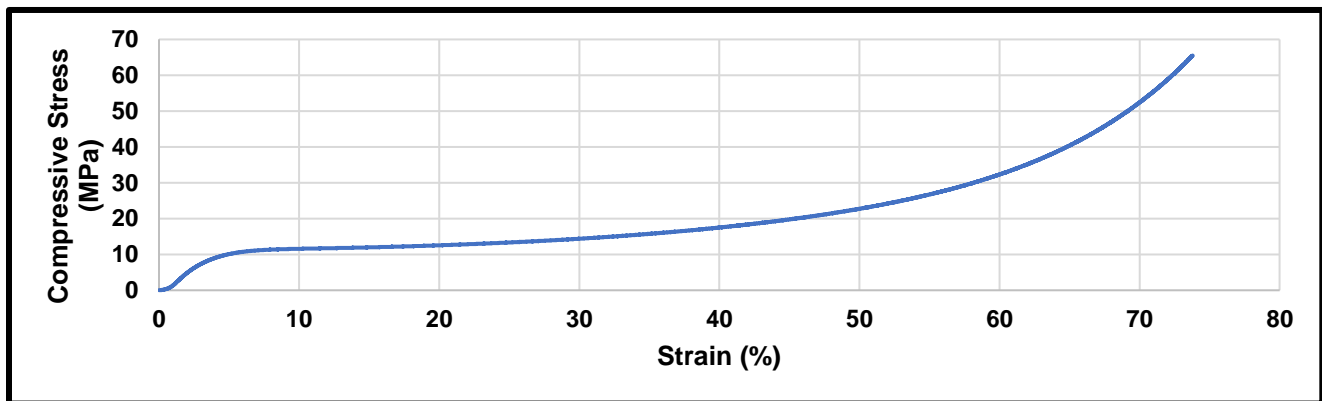
info@moxietec.com

Mechanical	Metric	Test Method
Notched Izod Impact, 23°C *	22.78 J/m	ASTM D256
Compression Strength **	66.7 MPa	ASTM D1621
Tensile Strength *	27.2 MPa	ASTM D638

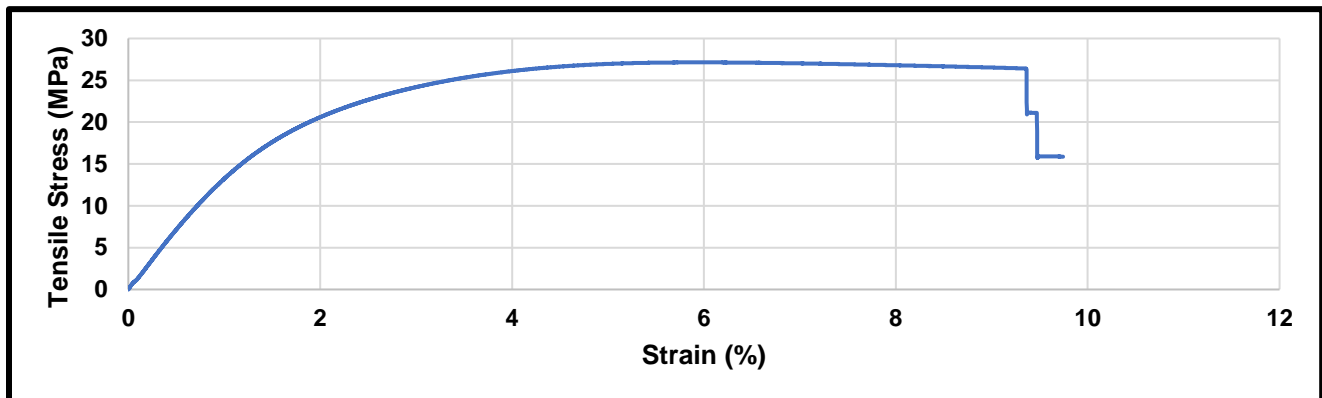
*- Data was collected from 7mm thick part with a 16% density reduction.

** - Data was collected from 57.15mm thick part with a 53% density reduction.

Compression:



Tensile:



770 Liberty Street Ext.
Grove City, PA 16127



724.807.8282



info@moxietec.com