

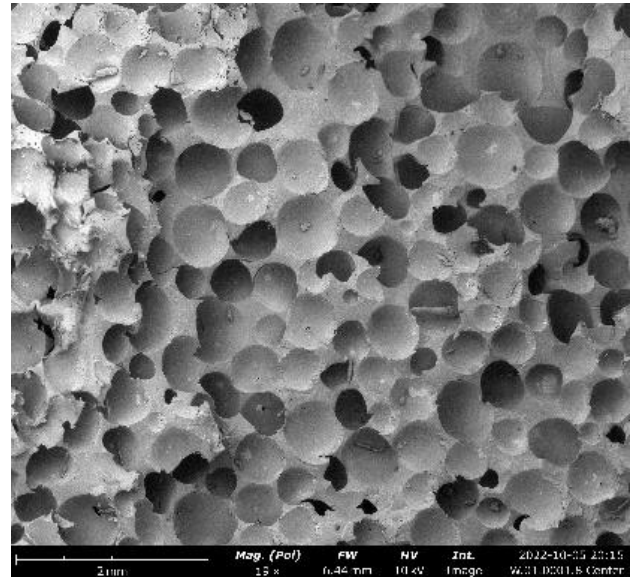
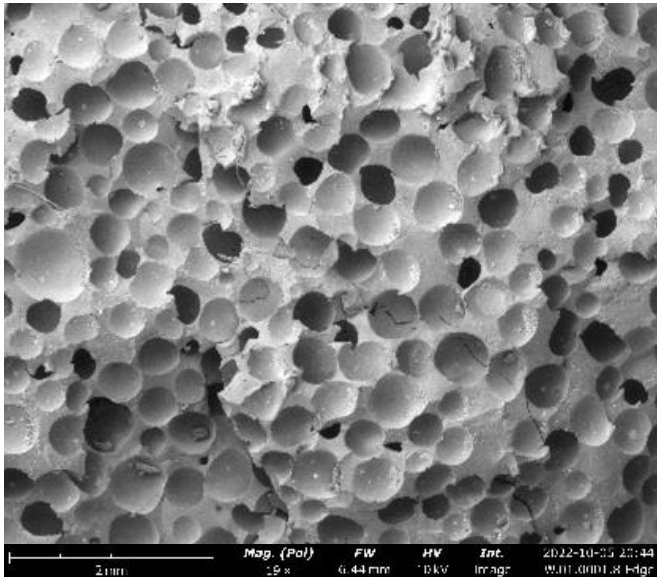
# Product Data Sheet

## Foam based Polyether Block Amide

Physical	Metric	Test Method
Density	<b>1.01 g/cc</b>	<b>ASTM D792</b>
Weight Reduction	<b>15 – 45 %</b>	

Edge Location

Center Location



### Morphological

### Metric

Avg. Cell Size	<b>4.47E+02 <math>\mu</math>m</b>
Avg. Cell Density	<b>1.09E+04 cells/cc</b>



770 Liberty Street Ext.  
Grove City, PA 16127



724.807.8282



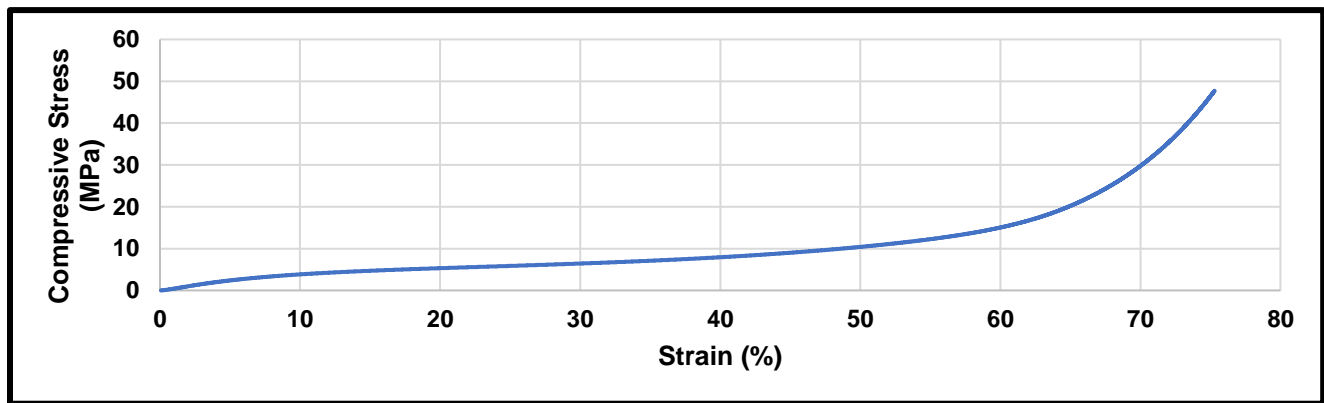
info@moxietec.com

Mechanical	Metric	Test Method
Notched Izod Impact, 23°C *	No break	ASTM D256
Compression Strength **	63.5 MPa	ASTM D1621
Tensile Strength *	21.0 MPa	ASTM D638

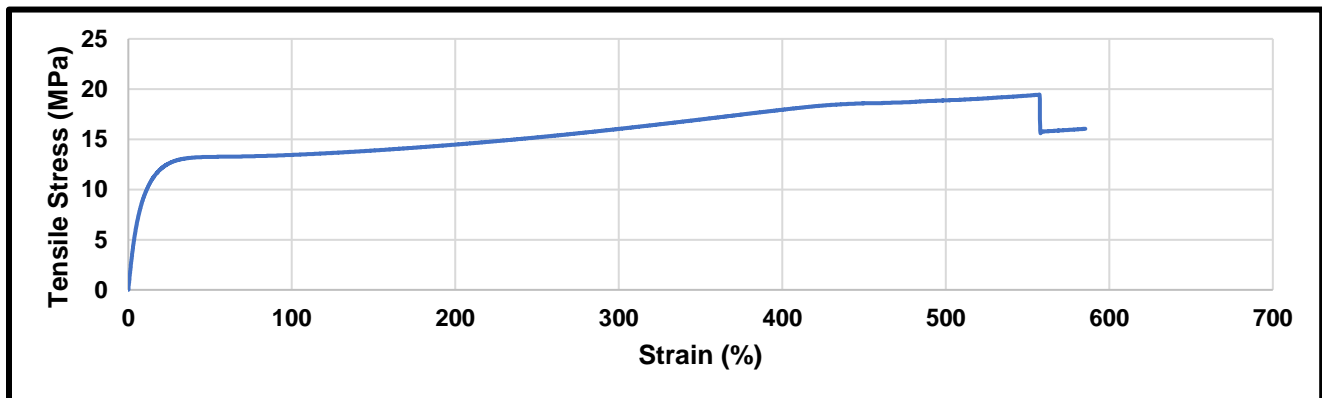
\*- Data was collected from 7mm thick part with a 15% density reduction.

\*\* - Data was collected from 57.15mm thick part with a 45% density reduction.

### Compression:



### Tensile:



770 Liberty Street Ext.  
Grove City, PA 16127



724.807.8282



info@moxietec.com