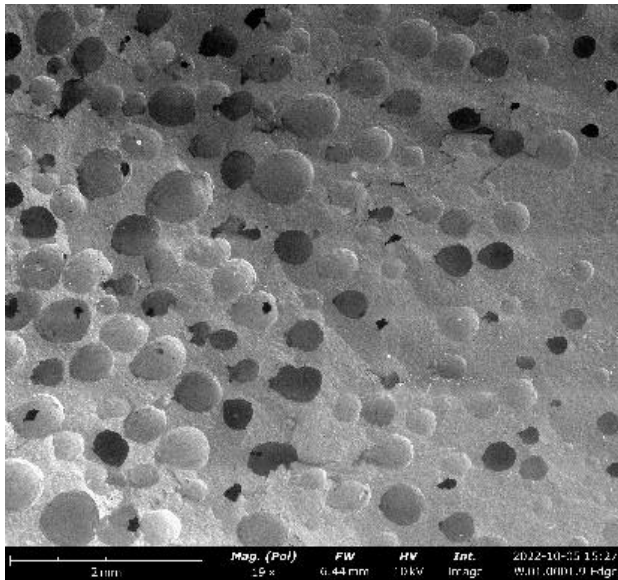


# Product Data Sheet

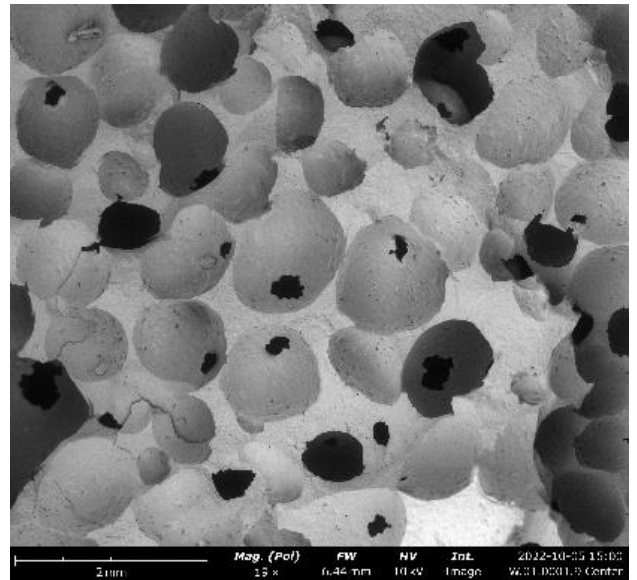
## Foam based Polyamide

Physical	Metric	Test Method
Density	1.14 g/cc	ASTM D792
Weight Reduction	23 – 43 %	

Edge Location



Center Location



### Morphological

### Metric

Avg. Cell Size	7.47E+02 $\mu\text{m}$
Avg. Cell Density	1.75E+03 cells/cc



770 Liberty Street Ext.  
Grove City, PA 16127



724.807.8282



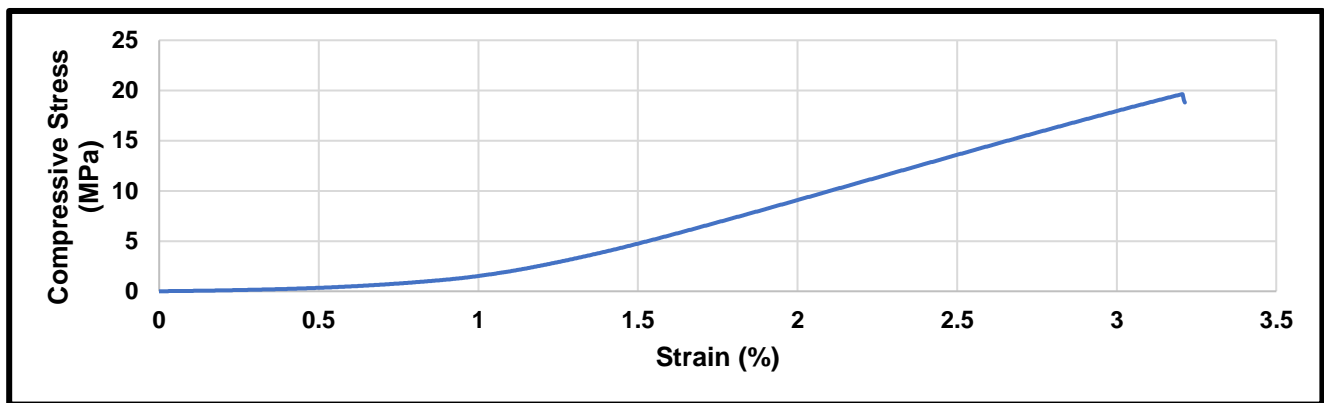
info@moxietec.com

Mechanical	Metric	Test Method
Notched Izod Impact, 23°C *	45.27 J/m	ASTM D256
Compression Strength **	28.3 MPa	ASTM D1621
Tensile Strength *	53.2 MPa	ASTM D638

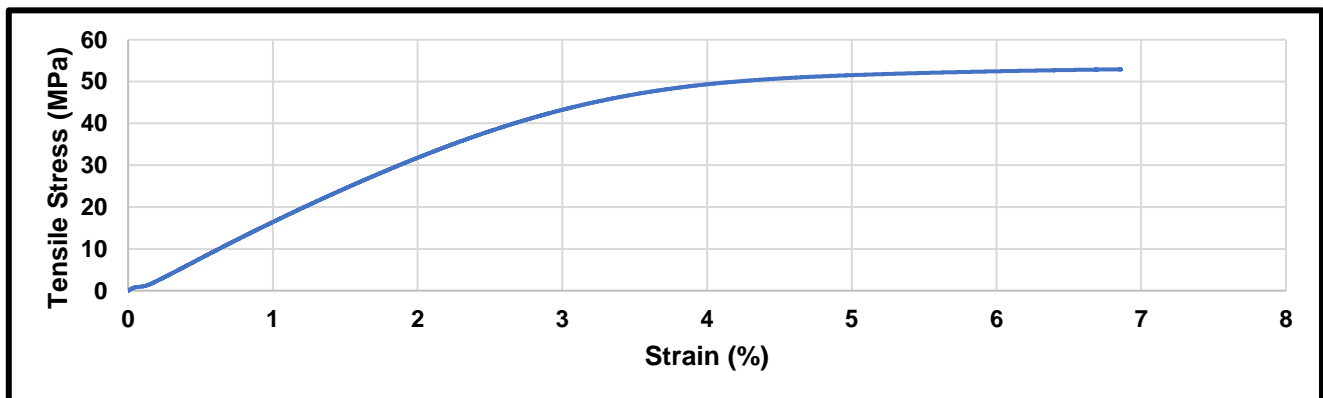
\*- Data was collected from 7mm thick part with a 23% density reduction.

\*\* - Data was collected from 57.15mm thick part with a 43% density reduction.

### Compression:



### Tensile:



770 Liberty Street Ext.  
Grove City, PA 16127



724.807.8282



info@moxietec.com